

OTTO
VON
GUERICKE

UNIVERSITÄT



Topic Engineering



Language English



Duration 1 semester



Platform Online



Degree Certificate of Advanced Studies

Photo credits: OVGU/Hannah Thiele

Certificate Program

Supply Chain Design & Collaboration

Otto von Guericke University Magdeburg

The Otto von Guericke University Magdeburg has a distinctive profile that focuses on engineering, natural sciences, economics and management as well as medicine. The university was founded in 1993 and has developed expertise in many academic areas in order to meet the challenges of the knowledge society. Over 14,000 students, including over 2,000 international students, are enrolled in over 80 study programs across our nine faculties. The dynamic, high-profile university campus offers state-of-the-art facilities, excellent student supports, and a practical hands-on education. An integration of research and teaching is our essential principle. We particularly encourage interdisciplinary and international projects.

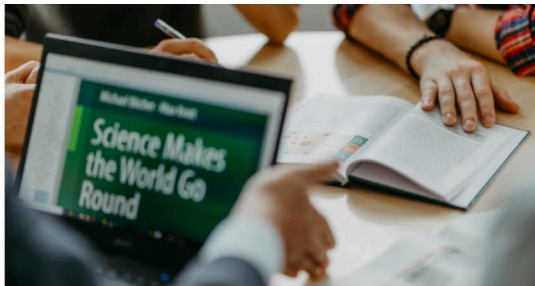


Photo credits: OVGU/Jana Dünhaupt

Institute of Logistics and Material Handling Systems

Formed in 2006, the Institute of Logistics and Material Handling Systems (ILM) has become one of the leading institutes in the area of logistics and supply chain management. We offer courses that focus on introducing the fundamental concepts of logistics and supply chain management, develop optimal supply networks as well as solutions and tools for material handling systems.

ILM represents research and education in the technical-oriented point-of-view on logistics. Working closely with both public and private organizations, ILM offers all students a highly networked community to exchange and develop engineering knowledge, innovation, and gain real-life experience.

About the certificate program

The certificate program **Supply Chain Design and Collaboration** is an academic certificate program that covers a broad range of topics related to logistics and supply chain management, including strategic planning of logistics networks, analyzing the supply chain networks, and learning to deal with challenges in managing supply chains. It aims to provide a detailed and critical view of the subject to strengthen both theoretical knowledge and practical skills. This certificate program can be continued and combined with other certificate programs to be concluded as a part of a master degree program.

For this module, you will be studying in two courses as follows:

Supply Networks and Logistics Service Providers (5CP)

- Identify and analyze the challenges and opportunities in managing complex supply networks, learn through case analysis how to deal with supply chain disruption and how to respond efficiently.
- Use an advanced simulation tool - 4Flow Vista to design and optimize supply networks as well as identify problems in supply networks where simulation can be useful for strategic planning.

Collaborative Management in Supply Network (5CP)

- Think critically in the managing perspective of logistics planning and dealing with business partners in order to create a win-win situation in partnerships.
- Explore the impact of decision making, a trade-off between options, and the importance of information sharing among each partner in a supply chain through a business simulation game, The Fresh Connection.



Graduation and degree

After successfully finishing the study module, students will be awarded - **Certificate of Advanced Studies - CAS**

Admission requirements

For admission to a certificate program, you are required to have:

- a bachelor's degree, a master's degree, or a diploma from a university, or an equally weighted higher education organization,
- one of the following English language certificate;
 - TOEFL test (paper-based 510, computer-based 189, internet-based 64),
 - IELTS test (5.5),
 - Cambridge Certificate of Advance English (CAE) with at least "B2",
 - or an equivalent certificate with an equivalent score.

Advice and Information

Please contact for more details and study fee,

Dr.-Ing. Jettarat Janmontree

Institute of Logistics and Material Handling Systems
Faculty of Mechanical Engineering
Otto von Guericke University Magdeburg
Universitätsplatz 2,
39106 Magdeburg, Germany

Tel. +49 (0) 391 67 52105

Email: jettarat.janmontree@ovgu.de

Closing date for applications

15 March of each calendar year

